

UNIT 122

(14 C.L.)

$R = 677.25'$
 $L = 2 \times 30'$
 $253.53'$ N 32° 0'

80' R/W ~ 24
 (P.B. 2003 PA

AT P.L. TO

FROM C.L.

ACCESS EA

10' N

SUMMIT

38' W

7.8'

90'

22'

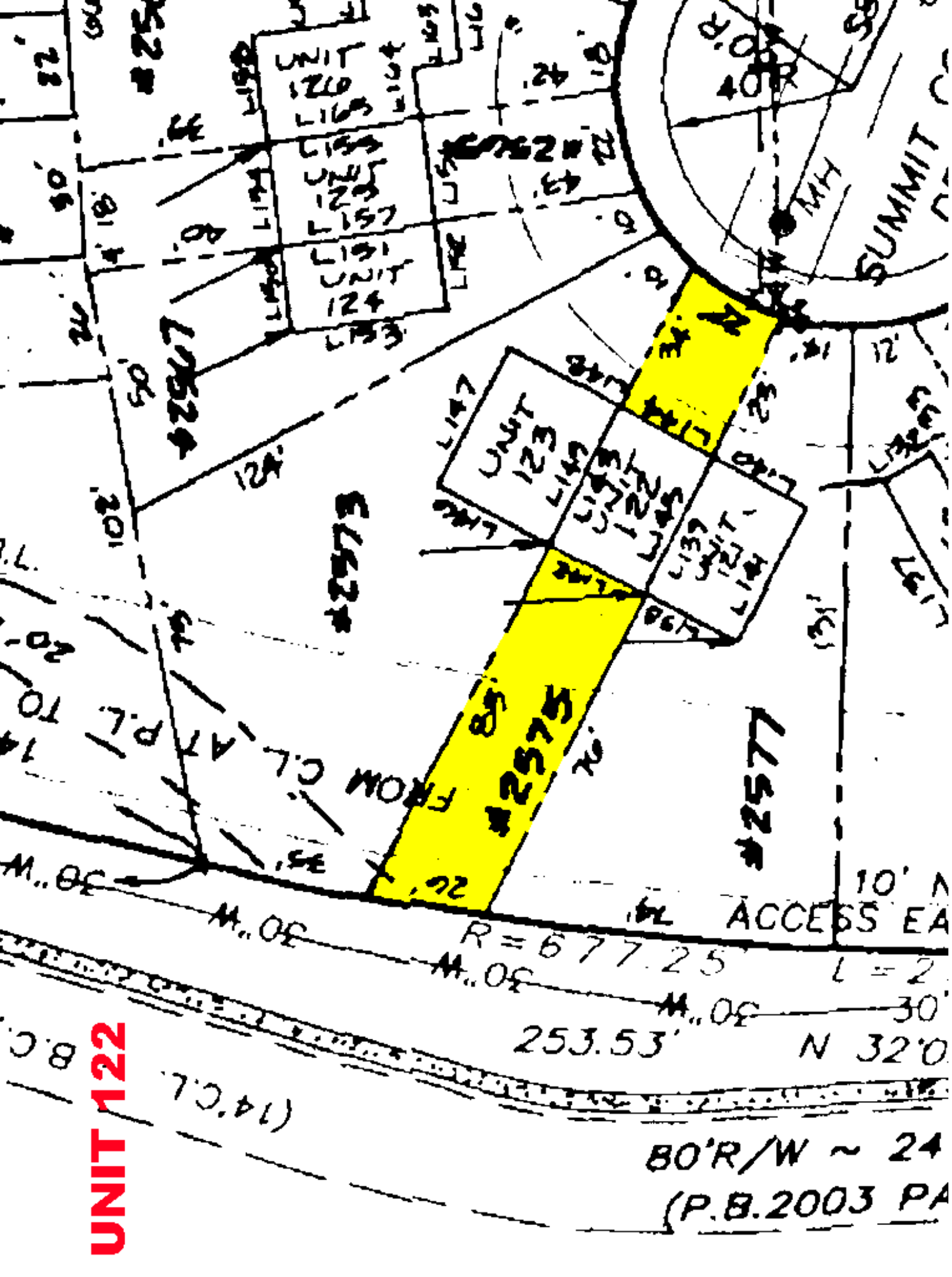
252'

17524

17624

17524

17577



UNIT 120
 UNIT 121
 UNIT 122
 UNIT 123
 UNIT 124
 UNIT 125

UNIT 121
 UNIT 122
 UNIT 123
 UNIT 124
 UNIT 125

